

asleep at the stitch.

asleepatthestitch.com

[asleepatthestitch](https://twitter.com/asleepatthestitch)

[@asleepatthestitch](https://www.instagram.com/asleepatthestitch)

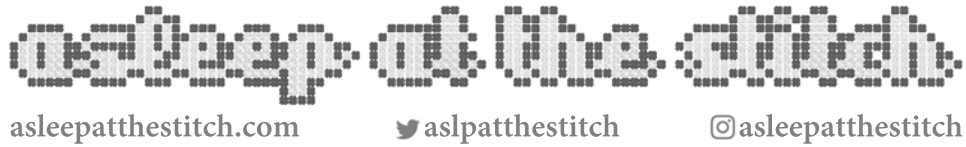
FUCK

Ranging from 29 x 7 to 33 x 7 stitches, which is between...

2.1" x 0.5" & 2.4" x 0.5" on 14 count 1.8" x 0.4" & 2.1" x 0.4" on 16 count 1.6" x 0.4" & 1.8" x 0.4" on 18 count
1.5" x 0.4" & 1.7" x 0.4" on 20 count 1.3" x 0.3" & 1.5" x 0.3" on 22 count 1.2" x 0.3" & 1.4" x 0.3" on 24 count

Recommend a black Aida





Background

Fuck has a very flexible role in English grammar, including use as both a transitive and intransitive verb, and as an adjective, adverb, and noun. It can also be used as an interjection and a grammatical ejaculation. Linguist Geoffrey Hughes found eight distinct usages for English curse words, and *fuck* can apply to each. For example, it fits in the “curse” sense (“fuck you!”) as well as the “personal” sense (“You fucker”). Its vulgarity also contributes to its mostly figurative sense, though the word itself is used in its literal sense to refer to sexual intercourse, its most common usage is figurative—to indicate the speaker's strong sentiment and to offend or shock the listener.

—“*Fuck*”, *Wikipedia*, 28 August 2020

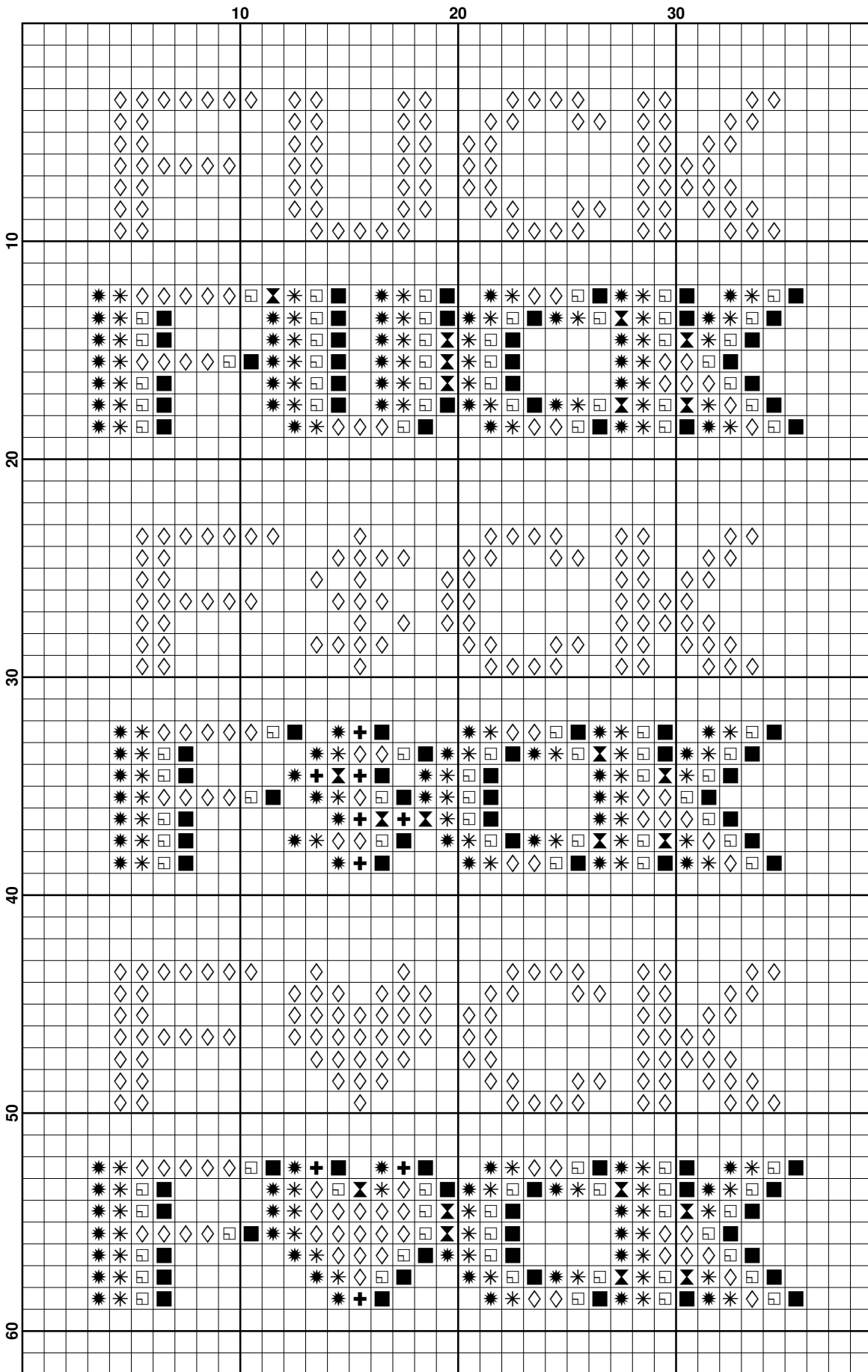
Suggested DMC Floss

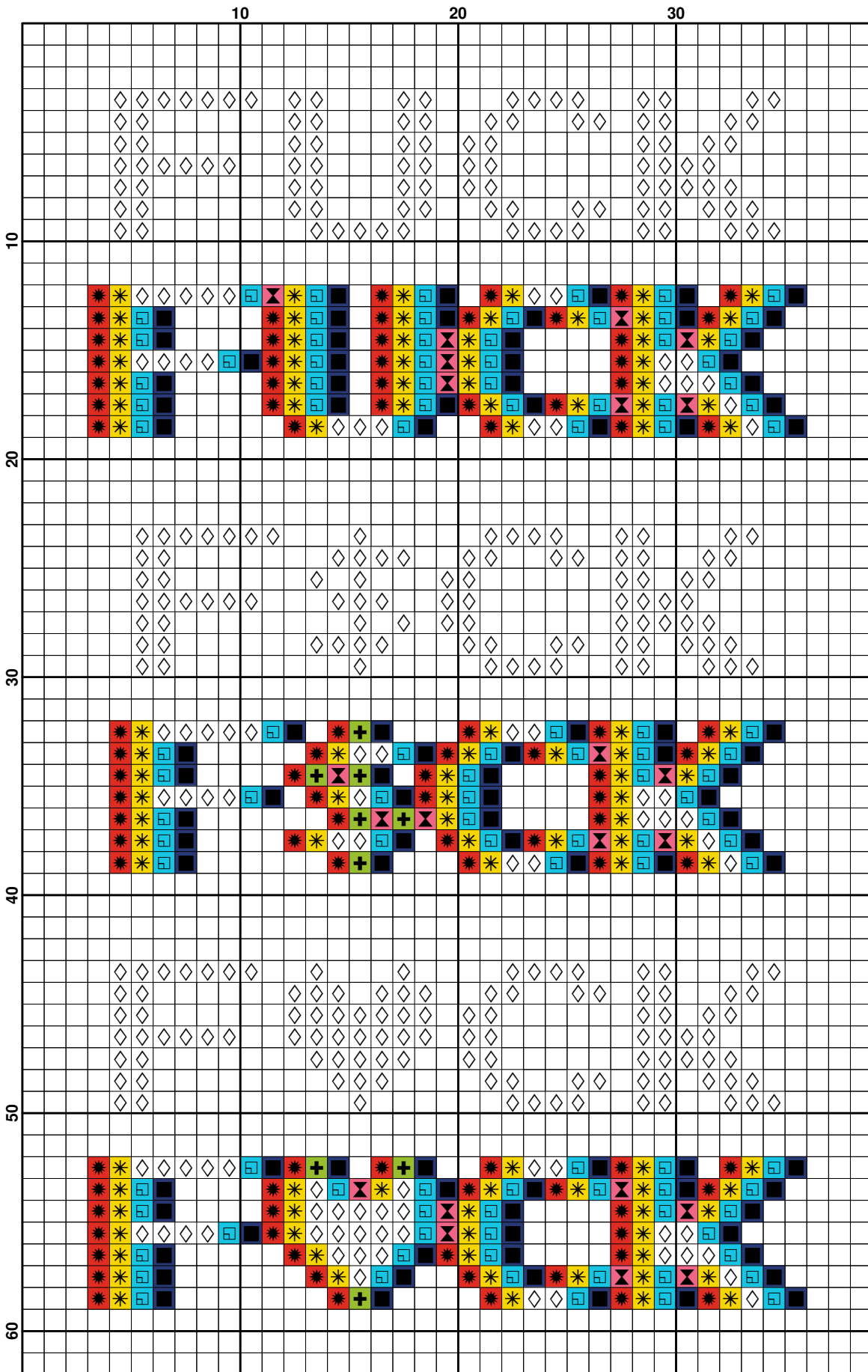
Symbol	ID	Name
✱	606	Bright Orange-Red
■	820	Very Dark Royal Blue
+	907	Light Parrot Green
✂	956	Geranium
✱	973	Bright Canary
◻	3846	Light Bright Turquoise
◇	B5200	Bright White

About the Pattern

Pattern © 2020 Charles Jones. This pattern may be freely distributed with attribution, but the entire PDF file (cover, intro, charts, and floss list) must remain intact.








Happy stitching!





Pattern Name: FUCK
Designed By: Charles Jones
Company: Asleep at the Stitch
Copyright: 2020
Fabric: Aida 14, Black
 33w X 56h Stitches
Size(s): 14 Count, 2-1/4w X 4h in
 16 Count, 2w X 3-1/2h in
 18 Count, 1-3/4w X 3h in
 20 Count, 1-5/8w X 2-3/4h in

Floss Used for Full Stitches:

Symbol	Strands	Type	Number	Color
	2	DMC	606	Bright Orange-Red
	2	DMC	820	Royal Blue-VY DK
	2	DMC	907	Parrot Green-LT
	2	DMC	956	Geranium
	2	DMC	973	Lemon-BRT
	2	DMC	3846	Bright Turquoise-LT
	2	DMC	B5200	Snow White